



D-CALC

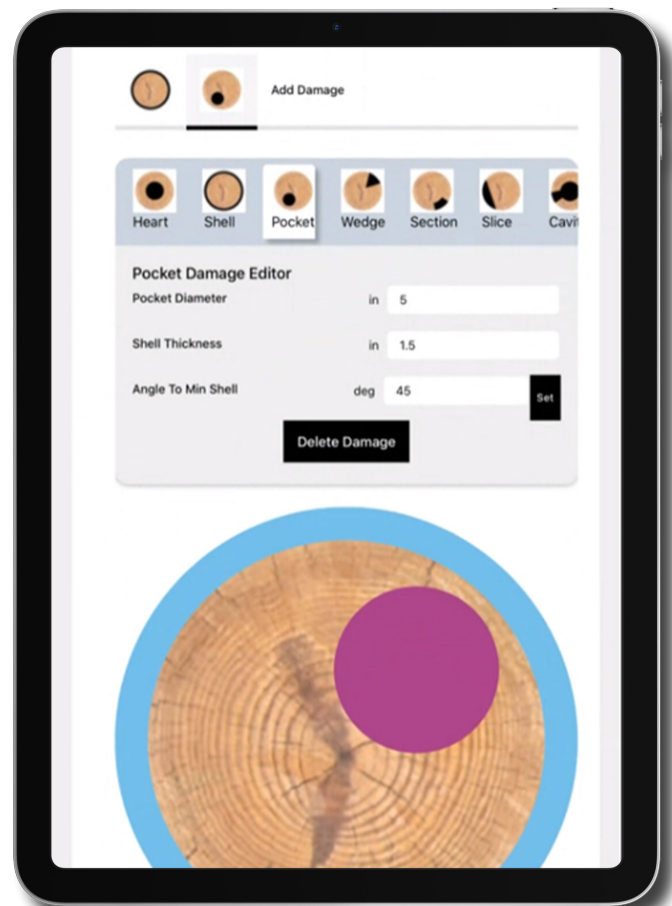
POLE DAMAGE ANALYSIS SOFTWARE

D-CALC PROVIDES POLE INSPECTORS AND ENGINEERS A TOOL TO QUICKLY EVALUATE THE EFFECT OF DAMAGE ON A POLE'S STRENGTH.

In the past, pole adequacy assessments were typically based on average remaining shell thickness or reduced circumference measurements. D-Calc allows the user to input pole properties and “draw” a representation of the damage observations, which it then uses to calculate the percent remaining strength based on section modulus.

D-CALC BENEFITS

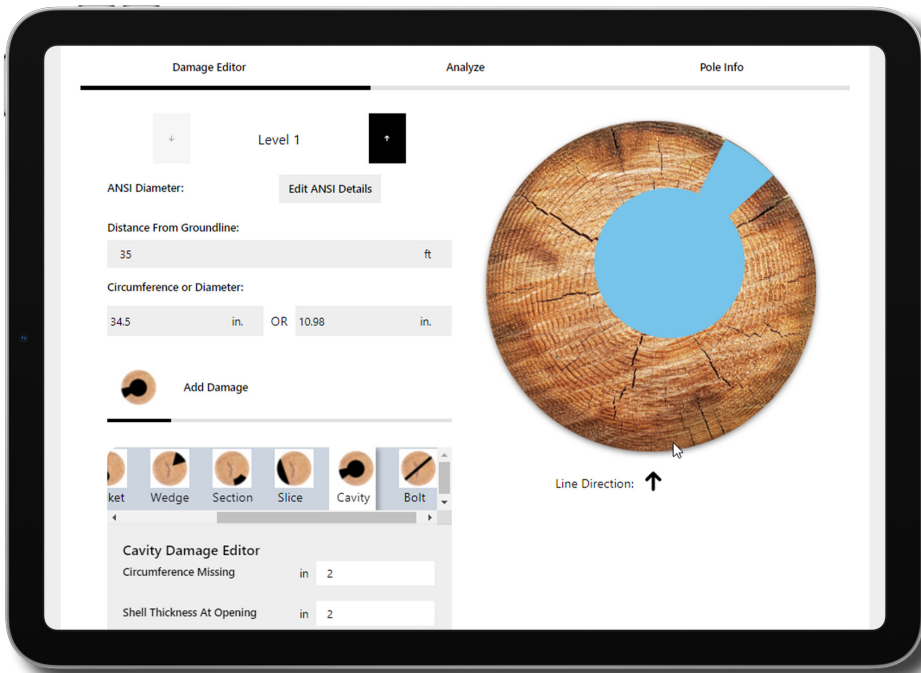
- Objective pole maintenance
- Bring your own device
- Auditable data
- Field-friendly
- Integration options



EDM INTERNATIONAL, INC.

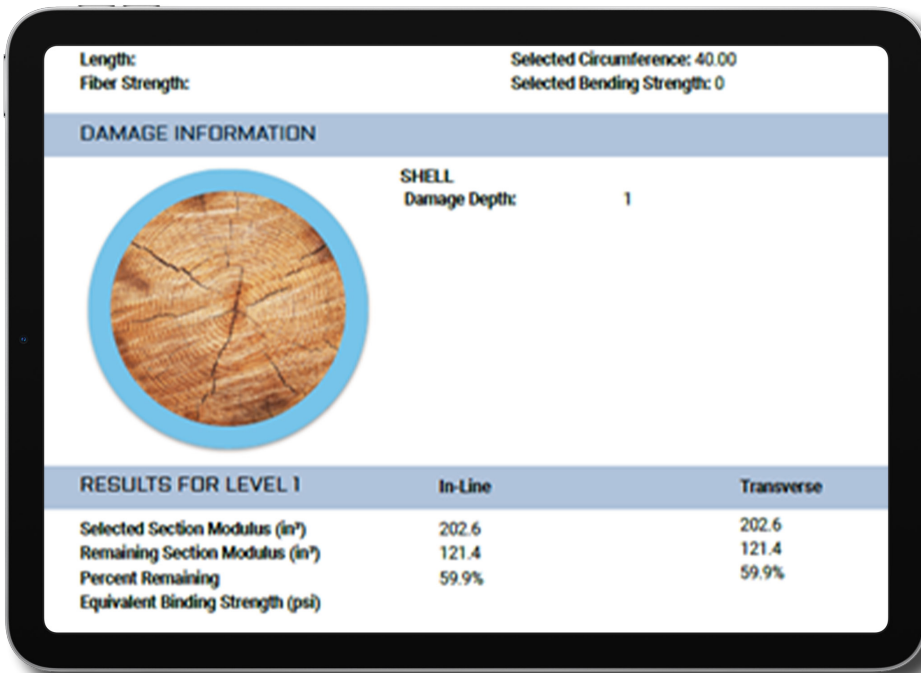
4001 Automation Way | Fort Collins, CO 80525

P: 970.204.4001 | ppetersen@edmlink.com | www.edmlink.com



FEATURES

- Simple data entry
- Optimized for any device
- Graphical display of damage
- Analysis of irregularly shaped and multiple concurrent damage
- Built in ANSI O5.1* reference tables
- Database support
- PDF reports
- Batch export options
- Direct integration with Esri field software



OUTPUTS

- Percent remaining strength based on user-defined modulus of rupture (MOR) and damage
- Pole properties including section modulus, moment of inertia and area
- Results based on minimum ANSI class dimension and actual measured pole dimensions to account for pole oversize

DEVICE COMPATIBILITY

D-Calc runs in internet connected as well as disconnected modes on Windows, iOS, and Android devices, including tablets and smartphones. D-Calc has a variety of import and export formats, and includes a direct integration to Esri Collector, Field Maps, and Survey123.

PRICING

- \$50 user/month
- \$500 user/year
- \$950 user/perpetual

API, SDK, and Enterprise options are also available upon request. Contact ppetersen@edmlink.com for more information.

EDM INTERNATIONAL, INC.

4001 Automation Way | Fort Collins, CO 80525

P: 970.204.4001 | ppetersen@edmlink.com | www.edmlink.com