



# CORROSION MANAGEMENT

## STEEL ASSET SERVICES

**EDM OFFERS A VARIETY OF SERVICES DESIGNED TO HELP A UTILITY BETTER MANAGE ITS STEEL ASSETS. THESE SERVICES ENCOMPASS ALL ASPECTS OF CORROSION MANAGEMENT FROM INSPECTION AND ASSESSMENT THROUGH MAINTENANCE AND REPAIR.**

GIS Corrosion Mapping provides a valuable visual view of the utility's assets showing different hazard zones. The GIS corrosion map utilizes published soils data to identify corrosion risk.

**Soil investigation** utilizes a variety of field measurements to evaluate the different factors that influence a soil's corrosivity, including:

- pH
- Redox potential
- Resistivity
- Steel to soil potential (half-cell)

**NDE inspection techniques** provide direct indications of the asset's condition, including:

- Visual
- CGWT
- MsS
- UT thickness measurements

**Cathodic Protection (CP)** helps protect buried steel assets against corrosion.

- Design/engineering
- Testing evaluation
- Installation

**Steel corrosion mitigation & repair** services include:

- Coating evaluation
- Coating specification
- Member repair or replacement design

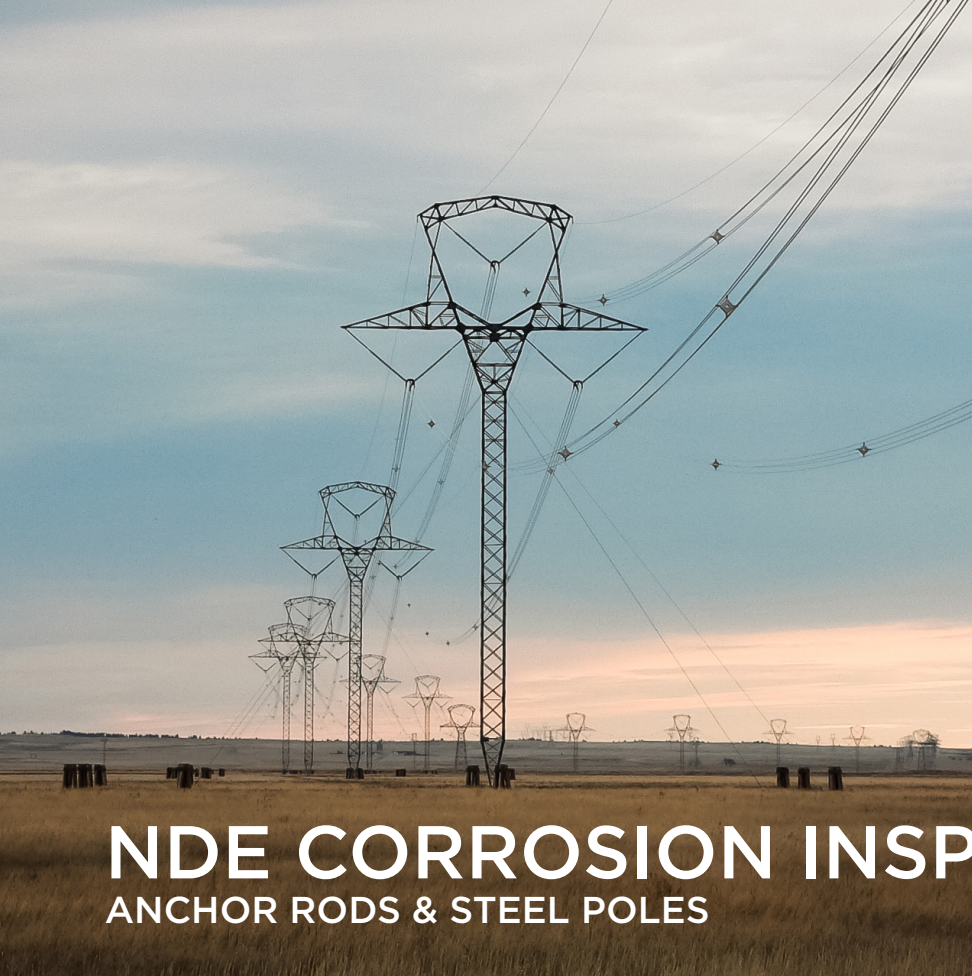
---

## EDM INTERNATIONAL, INC.

4001 Automation Way | Fort Collins, CO 80525

P: 970.204.4001 | [info@edmlink.com](mailto:info@edmlink.com) | [www.edmlink.com](http://www.edmlink.com)





# NDE CORROSION INSPECTION

## ANCHOR RODS & STEEL POLES

**EDM OFFERS TWO DIRECT-MEASUREMENT, NDE TECHNIQUES THAT HAVE BEEN SPECIFICALLY DESIGNED TO ASSESS THE CONDITION OF ANCHOR RODS, DIRECT EMBEDDED STEEL POLES, AND LATTICED TOWER STUB ANGLES.**

Both the Magnetostrictive Sensor (MsS) technique and Cylindrically Guided Wave Technique (CGWT), have been widely used and proven to be cost-effective options for assessing the below-ground condition of these assets. The NDE techniques classify the condition of an asset based on its degree of corrosion (minor, moderate, excessive).

### **APPLICABLE ANCHOR RODS**

- Rods with either solid or tubular cross-sections
- Top sections of multi-piece rods
- Rods in direct soil contact or encased in concrete
- Galvanized rods
- Copper clad rods
- DYWIDAG anchor rods

### **APPLICABLE STEEL POLES**

- Both circular and multi-sided steel poles (with or without a sacrificial corrosion collar)
- Poles in direct soil contact or encased in foam (no concrete backfill)
- Poles with any type of protective coating

### **APPLICABLE STUB ANGLES**

- Bare stub grillage foundation only

*Some of EDM's NDE applications utilize technology developed under the sponsorship of EPRI.*

---

### **EDM INTERNATIONAL, INC.**

4001 Automation Way | Fort Collins, CO 80525

P: 970.204.4001 | [info@edmlink.com](mailto:info@edmlink.com) | [www.edmlink.com](http://www.edmlink.com)